

# BEULAH BEACON

## WHAT DOES IT MEAN TO SEEK GOD?

By Pastor Don Gibson

In recent months and in this medium, the “Beulah Beacon,” I have set to help us all better understand our church-wide mission/vision statement; Transforming Lives as we Seek, Share and Serve God. We began our understanding of the statement by inspecting each of its components: what does transforming mean? Who does the work? How about seeking? What does this mean? Who do we seek? What does share mean? What are we sharing and why? This month I would like to unpack our understanding of serving. Who do we serve and how?

Serving God is what we were made for; created in the image of God for the glory of God. Created in the image God means that we are to display the image of God; that’s what images do. So, our very existence is service to God. Unfortunately, today words like serve, serving, and servant have negative implications because they describe something difficult and undesirable. A very common phrase heard often in today’s society is; “I am not your servant.” The Christian understanding of serving takes us back to the opening chapters of the Bible and God’s special creation of human beings in His image. These sacred words establish the starting point for our understanding of who we are in light of how and why we were created; by and for our Creator-God. Genesis 1-2 explains that God, the Creator, made all things out of nothing through the power of His Word and that God, as the Sovereign of the universe, did so for His honor and glory. This means that at the most basic level all that God created, including us, was made to serve



God. Lawrence O. Richards states “the creation does not exist independently of God, but continually depends on him for its existence and sustenance. God does not need the creation, the creation needs him and as it fulfills its purpose it testifies to His existence, wisdom, and glory.” So, we fulfill our purpose, serving God, as we testify to the existence of God by bearing His image! This is the basic understanding of our service. Our special creation in the image of God means that we were created to serve God in a way that goes beyond anything else that God has made.

So, what are some of the practical ways that we can and should do this?

First, we must serve God in truth, or in the way consistent with God’s Word. Jesus came to do the will of the Father and we must do the same. Jesus said that we can’t serve two masters because we will either hate one and love the other or we will be devoted to one and despise the other. Our service to God, bearing God’s image, begins with our faithful pursuit of God’s will for our lives. Paul reminds us that our service looks like everyday life, “whether we eat or drink, or whatever you do, do it all to the glory of God” (1Cor. 10:31).

## FEATURED ARTICLES

<b>Music Notes</b>	<b>Pg 2</b>	<b>Youth Group</b>	<b>pg 7</b>
<b>Month in Review</b>	<b>Pg 3</b>	<b>Baseball Faith Night</b>	<b>Pg 7</b>
<b>Beulah Day Homecoming</b>	<b>Pg 3</b>	<b>Summer Volunteers Opportunities</b>	<b>Pg 8</b>
<b>United Women in Faith</b>	<b>Pg 4 &amp; 5</b>	<b>VBS</b>	<b>Pg 9</b>
<b>Mission Opportunities</b>	<b>Pg 5 &amp; 6</b>	<b>Thank You</b>	<b>Pg 9</b>
<b>Bible Reading Challenge</b>	<b>Pg 6</b>	<b>Calendars</b>	<b>Last Page</b>



# MUSIC NOTES

By Deborah Wenrich

For the May Beacon, I chose to share with you the history behind the song, "I Sing Praises to Your Name", written by Terry MacAlmon in 1989. It was published by Integrity Music as "I Sing Praises" and it has been a top 40 Christian song across the world. It's still sung in many churches. Terry MacAlmon is an American, Christian singer, songwriter, musician, recording artist, worship leader, and author. He was born in 1955 the doctor told his parents that he would not live to see his 2nd month, due to cranial stenosis. His mother prayed every day for him asking God to heal him so that she could give him into God's service. It wasn't long before this baby was healed. At the age of three, he was picking out the notes to "Jesus Loves Me". When he was five, he played his first solo and at age eleven, he was the church pianist. In 1973 during a youth retreat, Terry MacAlmon recalls that the Holy Spirit rested heavily on him and the presence of God was so heavy that he couldn't raise his head. He knew that God was giving him a worship mantle.



Terry MacAlmon,  
February 2012

The next seventeen years, he served as a music minister for several churches and did concerts across America. In 1990, he started a church and fell on hard times. All of his efforts to draw people in, failed. Nobody came. He felt God speaking to him in 1998 to "gather the worshippers". Although he was reluctant to start, he did launch "Lunch with the Lord", a weekly Wednesday noon worship hour and several hundred came weekly.

In 2001, the tel-evangelist Benny Hinn contacted him to be a part of his crusade in Shreveport, LA. Benny Hinn believed that the Lord had raised up Terry MacAlmon to lead the church into a new era of worship. Benny Hinn said that Terry's songs were affecting his life and ministry. After the crusade was over, Terry noted that his album sales began going up and people were inviting him from all over the world. Since 2010, he has been traveling all over the world, leading worship services, teaching conferences, retreats, and churches in different denominations.

Wikipedia: The Free Encyclopedia Terry MacAlmon, 14, March 2024  
[https://en.wikipedia.org/wiki/Terry\\_MacAlmon](https://en.wikipedia.org/wiki/Terry_MacAlmon)

Continued from front page

Second, service without love is heavy work and full of resentment. Jesus said that the two greatest commandments are these: "Love the Lord your God with all your heart, and with all your soul, and with all your mind" and: "You shall love your neighbor as yourself" (Matt. 22:37-40), Jesus knew that love for God purifies our service and lightens the burdens that we encounter as we do the Lord's work. Our service to God comes from a place of deep love and gratitude - and the evidence of this love of God is seen in our bearing His image to others. Paul reminds the church at Phillippi that we do this for the Glory of God and with joy! Writing from prison Paul exhorts the Philippian believers to: "Rejoice in the Lord always; again, I will say, rejoice" (Philippians 4:4). And King David, in writing the Psalms, encourages us to "Serve the Lord with gladness! Come into his presence with singing!" (Psalm 100:2).

In service to God and others, by bearing God's image, we rediscover all we were originally made for and who we can be and more! To the church at Rome the Apostle Paul writes, "present your bodies as living sacrifices, holy and acceptable to God, which is your spiritual service (worship)" (Rom. 12:1).



By Barry Iglehart [root-cellar.org](http://root-cellar.org)

It is now May, 2024. It is a month of transition for us towards a weather pattern much more like summer than winter. It is also a "month" of transition for us as a people, a congregation. But where some things will change, most will not.

Our name as a group is now Beulah Church. Our status takes us from the United Methodist Church to the Global Methodist Church. This was not done lightly or on a whim, and there is grief in my own heart. There is also joy for as our name changes, we remain basically the same people we have always been. It is to that I wish to speak.

Our motto, our mission statement has for many years been... "To seek, to share, and to serve God". I understand this as the LORD, the God of the Bible, the God of Abraham, Isaac, and Jacob. The LORD of David, Paul, and of Jesus.

The first of my Hebrew words is for "seek". It reads "lekhapes". The second is "share", and it reads "lekakhat khelek". In our seeking and sharing our faith, our God, we are indeed serving Him. The selected Hebrew word for "servant", is "shamash". Shamash is the name for the lead candle in the Hanukkah menorah, the one already lit, the one that brings its light to lighting all the others.

If we seek God, Yahweh, we serve Him. If we share God, we serve Him. If we believe in Him and on Him, follow His Word and Holy Spirit particularly in His Son, Jesus, the Messiah, Yeshua, ha Mashiach, we also become the "servant", we are the "shamash". We continue to bring and light, and flame of God's love for humanity to a broken, dying world. Shalom.

# THE MONTH IN REVIEW

**On Saturday, April 13** a celebration of life was held for a long-time member Margret Ann Jones.



**On Sunday, April 14,** we celebrated women in mission and ministry at 11:00 worship. Ellen Stamps, wife of former pastor Dr. Bob Stamps, shared her message of accepting the gift of God's grace to free us to serve Jesus with joy, knowing that God will provide whatever we need for the path ahead of us. During the service, Pastor Don dedicated the prayer shawls made by our Prayer Shawl Ministry, which was created by Pat Compton and Ellen. They are pictured with UWF President Barbara Tuttle. After the service Jann Niccoli presented Ellen with a prayer shawl.



Also on **Sunday, April 14** during the 8:30 am service we welcomed Charles and Tissy Byers and their son Stephen into Beulah's membership. They are related to Ray and Rose Byers and have been to many of the Wednesday Worship Meals.

**On Tuesday, April 16** Beulah's Best had a fun gathering for their monthly meeting and the Beulah Land Quartet provided the music.



**On Sunday, April 21** the youth had a fun outing to Sky Zone Trampoline Park. They jumped, climbed warped walls, went through obstacle courses and had a great time of fellowship.



**On Monday, April 22,** in preparation for "Beulah Day" on May 19th, and the "Global Methodist Church Annual Conference" on May 31-June 1st, and the "Fall Festival" in November 9, some of the guys from our Monday morning "Men's Bible Study Group" and Al and Sherry Harris rounded up all of our picnic tables from our church grounds! They inventoried what we have, loaded up 3 to go to the dump as they were beyond repair, and organized them into groups for "repair" and "cleaning". On Saturday, April 26, many of the picnic tables were worked on and six new tables were purchased.



## BEULAH DAY HOMECOMING

*Celebrate Old Traditions and New Beginnings*

**Sunday, May 19, combined service at 10:30 am**

Please RSVP for lunch by signing up at the Information Center.

## BEULAH DAY HOMECOMING

We will *Celebrate Old Traditions and New Beginnings* on **Sunday, May 19,** at 10:30 am. After the combined service there will be a Dinner on the Lawn and a live band. If your Circle, Small Groups, or Sunday School Class would like to financially contribute to help cover the cost of the homecoming you can do so by making a check out to Beulah Church with "Beulah Day" written on the memo line. Everyone is encouraged to wear your NEW Beulah Church T-shirt.

## BEULAH T-SHIRTS

The Fall Festival Committee has ordered Beulah Church T-Shirts for Beulah day. There are sizes ranging from Youth small to Adult 3XL available. The shirts are a Gildan Soft style jersey T-shirt and are 100% pre-shrunk cotton. The order forms are located at the Volunteer Desk and can be returned to the Church office with payment. Please make all checks payable to Fall Festival. Shirts should be available for pick up on Sunday, May 12, after the 8:30 and 11:00 worship services. There are also water bottles and umbrellas available for purchase.

## BEULAH SHIRTS ARE AVAILABLE!!!

Order forms for shirts and other items are that the Volunteer Desk.

Proceeds from sales go to the Fall Festival





# United Women in Faith

## UWF MISSION WITNESS

The Daily Prayer Guide is published annually by United Women in Faith. It invites us to pray as one people responsive to God's call to relationships of caring, connecting and healing the world of uncertainty in all, but the love of God. Each month we share a testimony from a person in mission for Christ through the United Methodist Church.

### Scripture for the Month

*Go, eat rich food, and drink something sweet," Nehemiah said to them, "and send portions of this to any who have nothing ready!... Don't be sad, because the joy from the Lord is your strength!"*

- Nehemiah 8:10

### Witness

We harvested corn in the Asia Rural Institute field last week. In this harvest season, we often see farmers' hard work finally gaining results, and the results require labor to harvest, too. I planted lemongrass. During the rainy season in Japan in June and July, the growth was so slow, and some lemongrass had rotten roots. I could not help but suspect that lemongrass could not grow healthily. However, when the rainy season ended and the hot summer came, the lemongrass grew rapidly, reaching 80 cm (almost 6 feet), far beyond my imagination.

Our spiritual harvest is complicated, so we are often stuck in a certain period and unable to move forward without seeing an end point. It often makes us lose our confidence and motivation. This is what I experienced in Japan. How difficult it is to invite local people to church activities! It may take more time and more effort to support Japanese people in their journey to know God. But even if I do not know when the flower of the gospel seeds will bloom and when it may bear fruit, I believe that God is in control of everything and God knows the right time.

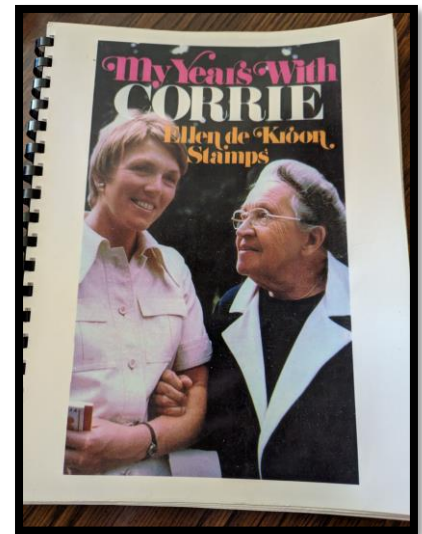
- Yu-Rong "Yvonne" Wang,  
Global Mission Fellow International  
from Taiwan serving in Japan, Asia Rural Institute

### Prayer

Please pray for international missionaries serving in Honduras, Hong Kong, India, Indonesia and Japan and missionaries serving in the United States in Louisiana, Maryland, Massachusetts and Michigan.

## MY YEARS WITH CORRIE BY ELLEN STAMPS

Back in 2001, Janie Reynolds, a faithful UMW member who has passed on, received permission from the publisher of Ellen's book to have reprints made, since the book is out of print. We are missing several copies, and we hope they can be found on the book shelves of our members who have forgotten they have them. Please check your shelves and those of your family members, and leave them in the church office for Barbara Tuttle if you find them. Many thanks!



**Mother/Daughter  
Pot Luck**  
on Tuesday, May 7,  
at 6:00 pm  
in the Fellowship Hall

## CALLING ALL WOMEN!

"April Showers Bring May Flowers", so put on your favorite floral print and bring a covered dish to the Mother/Daughter Pot Luck on **Tuesday, May 7**, at 6:00 pm in the Fellowship Hall. You can bring flowers from your garden to grace your table. Just for fun, bring a baby photo, and let's see how many know it's you! Just write your name on the back of the photo, put it in an unmarked envelope, and turn it in at the door when you enter. **Please sign up at the Information Center if you are coming.**

## THE UWF CIRCLES

There are four Circles (women's small groups) which are a part of United Women in Faith ministry. They are open to women who would like to participate. You do not have to be a member of Beulah Church to be involved with the Beulah's unit of the United Women in Faith.

All of the Circles are made up of women who are active, God fearing, and support each other along life's journey. As part of the UWF's statement of "Faith, Hope, and Love in Action" all of the Circles donate or participate in local, national, and international missions such as the Sherbourne Food Pantry, CCHASM, Heart Havens, Pregnancy Help Center of Chesterfield, Good Samaritan Ministries, UMCOR, and Friends of Barnabas. You will always find a way to be involved and giving back to the community when you are a part of Beulah's unit of UWF.

Please feel free to stop by any of the Circle meetings this month to see what they are about.

### Mary Farmer Circle of Love

Tuesday, May 14, at 10:00 am in the Fellowship Hall here at Beulah. They are led by Dale Childrey 804-921-9110 and Sarah Eastwood 804-275-2226.

### Rebekah Fellowship (not pictured)

Tuesday, May 14, at 6:30 pm at a local restaurant (please call to inquire about the meeting). They are led by Jerri Beatty 804-275-7964.

### Ruth Robertson Friendship Circle

Monday, May 13, at 12:00 pm at a local restaurant (please call to inquire about the meeting). They are led by Marcia Abernathy 804-303-3081.

### Wesleyan-Stratton Fellowship

Wednesday, May 15, at 12:30 pm in the Fellowship Hall here at Beulah. They are led by Anne Christopher 804-271-2131.



## CLEANING SUPPLIES FOR IRC

Our church (through the United Women of Faith) will be gathering cleaning items for the IRC (International Rescue Committee) this spring. The Department of State allocates funds to support each family's resettlement, but these funds are limited. By receiving these cleaning items through donations, the IRC can provide them to newly-arrived clients, enabling their funds to stretch further as they are getting on their feet. Our drive will end on Sunday May 5. Please help us gather these items to help those new in our area.

**(PLEASE NO LAUNDRY/DISH DETERGENT AND NO ALL-PURPOSE CLEANERS. THOSE ARE BEING PROVIDED THROUGH A GRANT THAT THE IRC HAS WITH ANOTHER PARTNER.)**

The items requested are as follows:

- Mops
- Mop buckets
- Broom and dust pan
- Vacuum cleaner (if the client has carpet in their housing)
- Cleaning rags
- Toilet brushes
- Trash bags
- Trash cans
  - Kitchen size
  - Bedroom/bathroom size
- Toilet Plunger

## UMCOR RELIEF KITS

Even though we are no longer UMC, we are still able to participate in the relief efforts of the United Methodist Committee on Relief, an organization open to anyone of any denomination. UMCOR is asking for Hygiene Kits, Cleaning Kits, and Menstrual Kits this year. Instructions for assembling the kits or making a financial donation are available at the Information Center. We will dedicate the kits on June 9.

## GERANIUM SALE RESULTS

Thanks so much to the Beulah family for purchasing 136 geraniums to benefit Shalom Farms, the biggest sale we have ever had at Beulah! The UMUMR Auxiliary sold 1,526 plants for a total of \$6,867, of which \$1,850 will go to Shalom Farms during their matching funds campaign where it will be doubled.

## COMMUNION OFFERING

The May communion is being split between...



### Society of St. Andrew

**GLEANING AMERICA'S FIELDS  
FEEDING AMERICA'S HUNGRY**

<https://endhunger.org/>

*(Information taken from the  
Society of St. Andrew's website)*

The Society of St. Andrew brings people together to harvest and share healthy food, reduce food waste, and build caring communities by offering nourishment to hungry neighbors. They envision a world in which physical and spiritual hungers are met through God's grace and abundance in Jesus Christ.



<https://shalomfarms.org/>

*(Information taken from the SHALOM FARMS website)*

Everyone deserves healthy food. Shalom Farms is a nonprofit working together to build healthy communities by growing and sharing healthy food. The food they grow is distributed through their network of programs and partnerships in communities where access to healthy food is limited. "Shalom" is a Hebrew word often translated as "peace." However, its meaning goes beyond just the absence of violence or oppression, to suggest the active presence of health and happiness, and an understanding that this wholeness and well-being belongs to everyone. For Shalom Farms, it represents their hope that all people in our community, and even the land and plants themselves, can be in a whole and thriving relationship together to support a healthy Richmond.

# BIBLE READING CHALLENGE

## MAY READING

01	Jeremiah 21-23	16	Ezekiel 1-4
02	Jeremiah 24-26	17	Ezekiel 5-8
03	Jeremiah 27-29	18	Ezekiel 9-12
04	Jeremiah 30-31	19	Sunday (Catch-up day)
05	Sunday (Catch-up day)	20	Ezekiel 13-15
06	Jeremiah 32-34	21	Ezekiel 16-18
07	Jeremiah 35-37	22	Ezekiel 19-20
08	Jeremiah 38-40	23	Ezekiel 21-23
09	Jeremiah 41-43	24	Ezekiel 24-26
10	Jeremiah 44-47	25	Ezekiel 27-29
11	Jeremiah 48-49	26	Sunday (Catch-up day)
12	Sunday (Catch-up day)	27	Ezekiel 30-32
13	Jeremiah 50-51	28	Ezekiel 33-34
14	Jeremiah 52	29	Ezekiel 35-37
	Lamentations 1	30	Ezekiel 38-40
15	Lamentations 2-5	31	Ezekiel 41-42



## SHERBOURNE FOOD PANTRY

During the month of May, the Sherbourne Food Pantry is asking for donations of personal care items. These items such as feminine hygiene products, paper towels, toilet paper, soap, deodorant, toothpaste, and toothbrushes are not usually available to Sherbourne's clients. Donations can be left on the wire rack by the Information Center or in the white after-hours donation cabinet in the Breezeway.

# KROGER COMMUNITY REWARDS

Beulah Church's number is **KV086**

Kroger is committed to community engagement, positive social impact and charitable giving at the national and local levels. Every community is unique, but their common goal is to partner with the neighborhoods they serve and help the people there live healthier lives. One of the ways in which they do this is through their Kroger Community Rewards program.

Once you link Beulah's Reward number to your Shopper's card, any transactions (this includes gas) using your Shopper's Card number will be applied to the program, at no added cost to you. Kroger donates quarterly to participating organizations based on your percentage of spending as it relates to the total spending associated with all participating Kroger Community Rewards organizations.

This is an easy way to give to the church. To link your shopper's card go to <https://www.kroger.com/i/community/community-rewards> down at the bottom of the screen is a blue box with a girl and a bee in it. Click on "get started". You will have to be logged in to the Kroger web site for this to process. If you need any assistance the church office will be happy to help you.



# FAITH NIGHT WITH THE CHILI PEPPERS

The Tri-City Chili Peppers are a collegiate summer baseball team playing in the Coastal Plain League. The Coastal Plain League has rapidly grown to be among the premier summer collegiate baseball leagues in the country. The CPL prides itself on creating a professional, minor league-like atmosphere for all its players, coaches, umpires, and fans. The Tri-City Chili Peppers play their home games at Shepherd Stadium in Colonial Heights, Virginia. Their team is known for having players from "local" colleges such as VMI, UVA, and VCU. Going to the games is a great way to support local students dependent on their baseball scholarships for their education.



**Sunday, June 9**, at 5:45pm is Faith Night with the Chili Peppers and Beulah Church will be going to the game. Tickets are \$20 per person and include reserved seating, a meal voucher, player autograph, and pictures with the mascot. There is also a play area for kids ages 4 to 11. Please sign up at the Information Center by **Sunday, May 26** to let us know you will be coming. To pay for your ticket please make a check out to Beulah Church with "Baseball" on the memo line and turn it in to the church office or place it in the offering. If you have any questions please contact the church office.

# YOUTH GROUP

The Youth Group meets from the beginning of September to the end of May and is open to any youth between grades 6 and 12. We meet the 1<sup>st</sup> and 2<sup>nd</sup> Sunday of the month at 5:30 pm for dinner, devotional, and games. The 3<sup>rd</sup> Sunday of the month is dedicated to outings and mission opportunities. The summer is filled with fun gatherings and volunteer opportunities.

## Summer Youth Events *(please let Pastor Don know if your youth would like to participate)*



**June 9**, the youth will be going to Faith Night with the Chili Peppers and have the option of participating in mini games on the field in-between innings.



**June 25-28, VBS Week:** The youth will be helping assist with Vacation Bible School.

**July 23-26, Youth Mini-Mission Week:** The youth will be participating in community projects such as visiting local senior living communities and assisting those in need.

**August 11, Back to School Sunday:** 5<sup>th</sup> graders officially transition into the Youth Group and there is a pool party in celebration of the new school year.



# WAYS YOU CAN VOLUNTEER THIS SUMMER

Summer is quickly approaching and with it the break from regular church activities. There are many ways to stay involved with the church in-between trips and visiting family. Please check the list below to see how you can keep connected over the summer. If you are interested in volunteering in any of these area's, you can contact the church office at [office@beulah-church.com](mailto:office@beulah-church.com), speak with Pastor Don, or sign up at the Information Center.

## CHILDREN AND YOUTH *(To sign up please contact Pastor Don Gibson at [don@beulah-church.com](mailto:don@beulah-church.com).)*

### VACATION BIBLE SCHOOL

VBS is in the mornings of June 25 – June 28. We are in need of helpers for the different age groups, classroom workers (science, story time, crafts, and music), people to help prep on Monday the 24<sup>th</sup> and clean up after the service on Sunday 26<sup>th</sup> and Monday the 27<sup>th</sup>. There is a sign up sheet at the Information Center. If you have any questions please contact Pastor Don at [Don@beulah-church.com](mailto:Don@beulah-church.com)

### CHILDREN'S CHURCH TEACHER

During the 11:00 am service on the 2<sup>nd</sup> and 4<sup>th</sup> Sunday of the month children in grades K-5 leave the worship service for Children's Church. As the children's teacher you will have a prepared lesson given to you so you will not have to plan anything. The children do crafts, stories, and fun games to help them learn about the love and salvation found in Jesus. The volunteer requirement is monthly or bi monthly depending on your availability.

### CHILDREN'S SUNDAY SCHOOL TEACHER

The Children's Sunday School class meets every Sunday at 9:45am in room 110. As the children's teacher you will have a prepared lesson given to you so you will not have to plan anything. The children do crafts and fun games to help them learn about the love and salvation found in Jesus. The volunteer requirement is monthly or bi monthly depending on your availability.

### NURSERY WORKER

The nursery is vital to worshiping families as it gives mom and dad an opportunity to freely worship God without having to constantly keep a worrying eye on the family. The nursery is available for newborns to pre-k age. The children, while in the nursery, learn about Jesus and have foundation of trusting God taught to them. Koranny is the Nursery lead teacher and is there every Sunday. As a volunteer, your roll will be to support her in her lessons and show the love of Christ to the children. The volunteer requirement is monthly or bi monthly.

## SUNDAY MORNINGS *(To sign up please contact Suzanne Davis at [suzanne@beulah-church.com](mailto:suzanne@beulah-church.com).)*

### SCRIPTURE READERS

As a Scripture Reader you are given the opportunity to share the Word of God with the congregation during worship service and at special times through out the year. You are emailed the scripture the Wednesday before the Sunday you sign up for so you will have time to be familiar with the reading.

### VISITOR CENTER

The Visitor Center is located in the Narthex to help introduce visitor's to the church. As a Desk Volunteer you will greet visitors, give them a gift, assist them with any questions they might have, and direct them to a Worship Buddy. As a Worship Buddy you would sit in church with the visitors and be a friendly face and help them with hymnals and any questions they have about the service. The volunteer requirement is monthly or bi monthly depending on your availability.

## DURING THE WEEK *(To sign up please contact Pastor Don Gibson at [don@beulah-church.com](mailto:don@beulah-church.com) or church office at [office@beulah-church.com](mailto:office@beulah-church.com).)*

### CARE TEAM

Beulah has many people who are homebound or who's family's are living out of the area. No one should have to live life alone. If you are interested in showing "Care" for someone else through a phone call or a visit, we can connect you to someone in the church in need of "Care".

### BUILDING AND GROUNDS

There are many little repairs needed around the church from fixing a wheel on cart to pulling weeds in the garden. If you would like to donate your "handyman skills" to help keep the building and grounds beautiful and running smoothly we would love to have your help.



# THANK YOU

*To: Beulah*

*From: Barbara Dudley, Worship Chair*

I would like to thank Pat & Glynn Soyars, Barbara Tinsley, Sandra Sanderson, and David Dudley for offering to help me make our Sanctuary and Easter Cross so beautiful for the Easter season. I am blessed to have such wonderful, faithful friends.

*To: Barbara Dudley*

*From: Anonymous*

Just a word of thanks to Barbara Dudley for all she does as our Worship Chairman. Barbara spends many hours doing all that needs to be done to keep Beulah a beautiful place to worship. During special holidays she is at church almost daily to be certain everything is as it should be. At very busy times during special holidays, David and others step in to help, but it is Barbara that oversees all that's done to give us a worshipful experience. Barbara loves her church, and that love is evident in all she does. Thank you, Barbara.

*To: Beulah Church*

*From: Rebecca Huff, MSW, QDDP,  
Chief Executive Officer, Heart Havens*

I hope this letter find you well. I am writing on behalf of Heart Havens to express our sincere gratitude for your recent donation. Thanks to your generosity, Heart Havens can provide essential support to adults with developmental disabilities, helping them live fulfilling lives as active members of their communities. Thanks to your donation, we can cover vital expenses such as groceries, internet, and phone plans, household supplies, vehicle costs for community participation, home maintenance, and incidental medical expenses. Your donation means residents are able to enjoy the spring weather with community outings to local parks, zoos, and festivals. Each day, we witness the positive impact your donation has on the lives of those we support in both small and big ways. Your kindness and compassion make a real difference in our community; we are immensely grateful for your commitment to our mission.

*To: Beulah Methodist Men's Bible Study Group*

*From: Sharry Harris*

Thanks to this group of wonderful men for your work and support doing the "heavy lifting" jobs around the church. Thank you for helping us clean up the shed and loading trash on the trailer. Thanks also for helping us load up and move the picnic tables to a central location and for loading the damaged ones to go to the county dump. You gentlemen are amazing role models for our church! Sincere thanks for everything!

## VACATION BIBLE SCHOOL

Vacation Bible School is Tuesday, June 25 - Friday, June 28. We are happy to announce that the Registration for VBS 2024 – Breaker Rock Beach is Open! This year we will be learning about Romans 12:2 and how God's Truth is the solid rock in a world of shifting sand. Please go to [Beulah-church.com/VBS](http://Beulah-church.com/VBS) to find the Registration Form! You may also find the registration form at the Information Center. If you know of any students who will be in Elementary School as of Fall 2024, share with them this great news about this year's VBS!



## VBS DÉCOR WORKSHOP

Mark your calendars! June 10 from 1:00 pm to 4:00 pm is the VBS Décor Workshop. Come, when you can, to paint, color, cut, and glitter. Please sign up at the Information Center so there will be enough snacks and drinks to go around.

## BEULAH SCHOLARSHIPS

The deadline for Scholarship applications is ending today **May 1, 2024**. Applications can be found on the church's website. If you have any questions please contact the church office at 804-275-2325 or email us at [office@beulah-church.com](mailto:office@beulah-church.com).

## BEULAH'S BEST

Beulah's Best will meet May 21, at 10:00am in the Fellowship Hall. For our program the "Beulah Land Quartet" will be sharing patriotic music. After the program we will enjoy a covered dish dinner. Hope to see you there.



## BEULAH METHODIST MEN

The next meeting for Beulah Methodist Men will be on **Tuesday, May 21** at 6:00 pm in the Fellowship Hall. The dinner is being catered by Sibley's BBQ. Please sign up at the Information Center so they will know how much food to purchase.

## CALENDAR

### MAY

- 03 Mariners Dinner
- 07 Mother Daughter Dinner
- 11 Hearing Loss Association
- 12 **Mother's Day**
- 13 Ruth Robertson Friendship Circle
- 14 Mary Farmer Circle of Love  
Rebekah Fellowship  
Finance Committee
- 15 Wesleyan Stratton
- 19 **Beulah Day**
- 21 Beulah's Best  
Prayer Shawl Ministry  
Beulah Methodist Men's Dinner
- 28 Springdale Bible Study
- 29 Prayer Meeting
- 31 GMC Conference

### REOCCURRING WEEKLY

#### Sunday

- 8:30 Worship
- Sunday School
- 11:00 Worship
- Youth Group

#### Monday

- Card Ministry
- Men's Bible study
- Women's Chorus rehearsal
- Bells of Praise Rehearsal
- Scouts

#### Tuesday

- Cub Scouts

#### Wednesday

- Children and Youth Bells

#### Thursday

- Beulah Land Quartet Rehearsal
- Sanctuary Choir Rehearsal

## BIRTHDAYS

### MAY

- 05 Mary Anne Huband
- 06 Pastor Don Gibson
- 09 Butch Beatty
- 10 Emma Gibson  
Sonny Turner
- 12 Anne Williams
- 15 Mike Bates  
Jim Harris  
Ellen Trimble
- 16 Rachayl Powell
- 22 Tom Bradmon  
David Conner  
Kenneth Shanks
- 23 Kenneth Brooks  
Zachary Glazier  
Inez Johnson  
Jessica Piper
- 25 Wendy Clark
- 27 Sydney Shakespeare
- 28 Rose Byers
- 31 Diane Kleis

### JUNE

- 02 Martha Payne
- 04 Jeff Moats  
Butch Sanderson
- 05 Anne Christopher  
Ann Gould



## GLOBAL METHODIST CHURCH CONVENING CONFERENCE

Beulah Church has been asked by the Global Methodist Church to host its Convening Conference on May 31 - June 1. We are honored and blessed to offer our beautiful church and facilities.

In hosting the GMCCC, Beulah has been asked to provide volunteers to support the 2-day event. We are providing greeters, people to work the registration and give-a-way tables, ushers, food prep and serving (purchased boxed lunches both days), breakfast -grab-and-go, snack tables, parking lot attendants in the mornings, first aid station workers, and some "stand by" folks if needed. Our volunteers can sign up for a shift on either or both days, or to work all day. We will have jobs where you can sit down (i.e. Registration Tables) or standing and walking around with breaks (i.e. greeters). For those working all day, lunch will be provided. Snacks and water will be available all day. Name tags will be provided.



**May 31 - June 1**  
**Here at Beulah Church**

Contact Beth Spitzley Or Sherry Harris to be a volunteer.

For more information or to volunteer, please contact Beth Spitzley at 804-304-0829 or Sherry Harris at 804-691-5678 or sign up on form at the Information Desk at the church. Thank you for supporting this GMC program!